



BENHA UNIVERSITY
FACULTY OF ENGINEERING
DEPARTMENT OF ARCHITECTURE

AE1342-URBAN DESIGN(1)-LECTURE 8

INTRODUCTION TO ENVIRONMENTAL PSYCHOLOGY

DR. MONA SHEDID

ASSOCIATED PROFESSOR , FACULTY OF ENGINEERING, BENHA UNIVERSITY

SPRING 2019

INTRODUCTION TO ENVIRONMENTAL PSYCHOLOGY



CONTENT

An aerial photograph showing a two-lane road curving through a forest with vibrant autumn foliage in shades of yellow, orange, and red. A white van and a red car are visible on the road. The top left corner of the slide features a dark green background with the word 'CONTENT' in white.

- ENVIRONMENTAL PSYCHOLOGY
- DIFFERENT ASPECTS OF CREATING SOCIAL URBAN SPACES

INTRODUCTION...

ENVIRONMENTAL PSYCHOLOGY

Environmental Psychology



how humans influence the environment

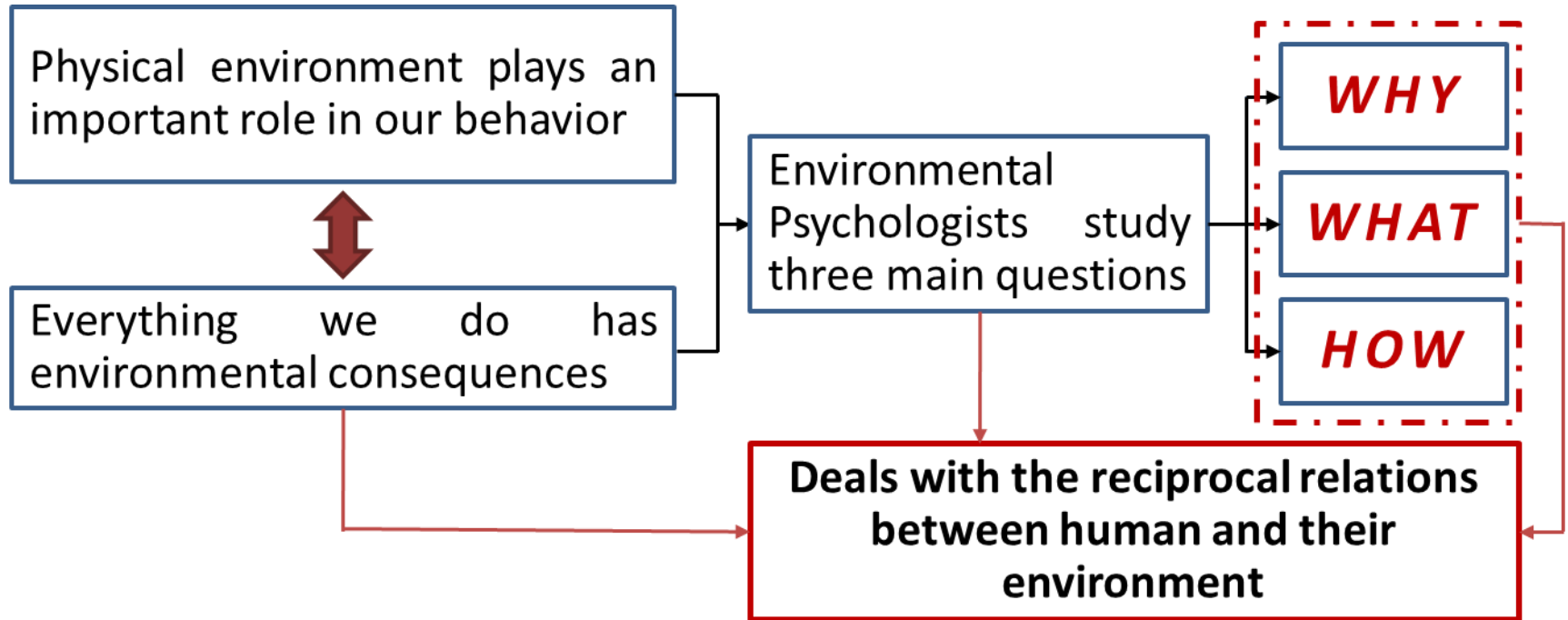
how our natural and built environments shape us

how people interact with their surroundings

how the environment influences
human experiences

how the environment influences
human behaviors

ENVIRONMENTAL PSYCHOLOGY



ENVIRONMENTAL PSYCHOLOGY

WHY WHAT HOW



The ability to research to find solutions by identifying problems



An environmental psychologist's job is to look into **everyday problems**. They believe that **concepts and principles** should be derived from their surroundings.

ENVIRONMENTAL PSYCHOLOGY

Human Dimensions



Physical Urban Environment



Achieving the vision of lively, safe, sustainable and healthy urban spaces.



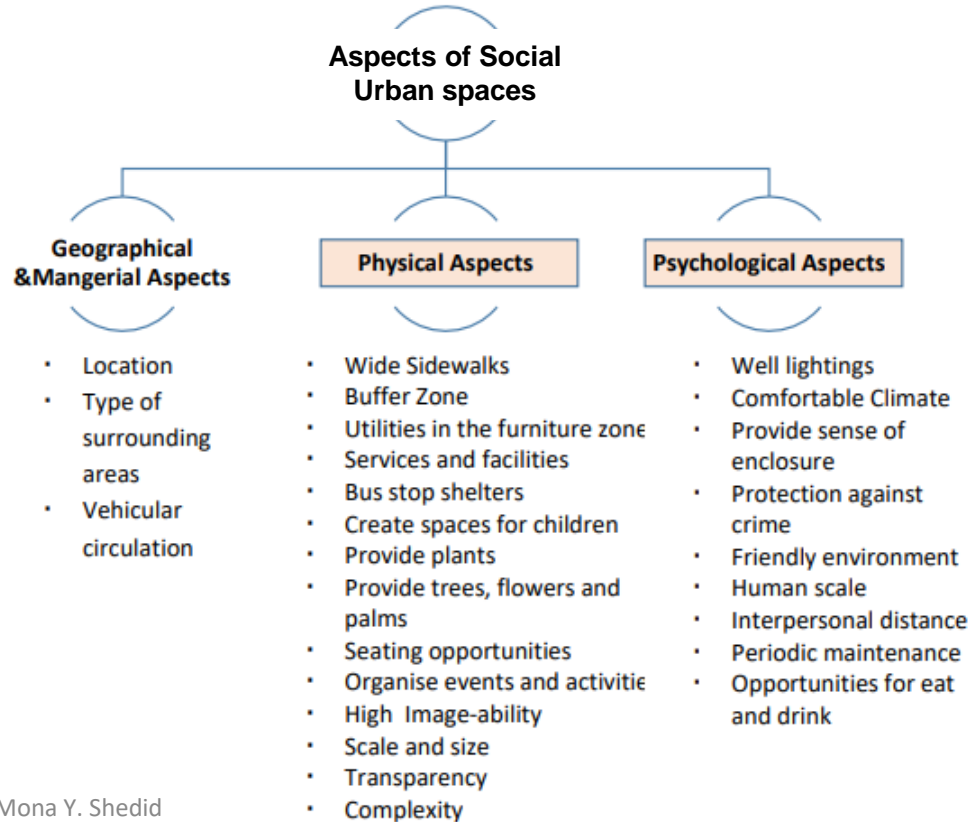
To achieve better urban quality.





DIFFERENT ASPECTS OF CREATING SOCIAL URBAN SPACES....

DIFFERENT ASPECTS OF CREATING SOCIAL URBAN SPACES



DIFFERENT ASPECTS OF CREATING SOCIAL URBAN SPACES

Social Urban Spaces should satisfy some **psychological aspects** as well as physical ones. Psychology in the urban context refers to anything that **affect feelings and behavior of the users**. Psychological aspects are as the following:



Safety and Protection

Well lightings

Comfortable microclimate

Sense of enclosure



Sensual human attributes

Friendly environment

Human scale

Interpersonal distance

Clean environment

Opportunities to eat & drink

DIFFERENT ASPECTS OF CREATING SOCIAL URBAN SPACES



1- Safety and Protection: - Well Lightings:

Importance of providing urban space with plenty of suitable light sources:

1. Promote safety.
2. Make the urban space visually comfortable.
3. Extend opportunities for physical activity into the evening.
4. Help to protect the space against crime and violence.
5. Enhance walkability and vitality of the urban space.

DIFFERENT ASPECTS OF CREATING SOCIAL URBAN SPACES

1- Safety and Protection: - Comfort Climate:

Provide a comfortable microclimate for the urban space by designing and creating plazas and different shadings to accommodate and resist to variety of weather conditions.



Different shapes of shades that help in create a comfortable climate.

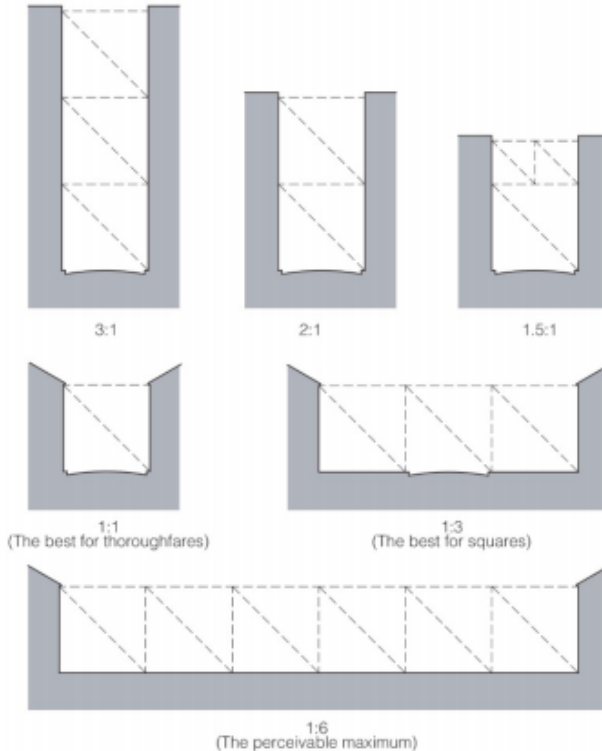
DIFFERENT ASPECTS OF CREATING SOCIAL URBAN SPACES

1- Safety and Protection:

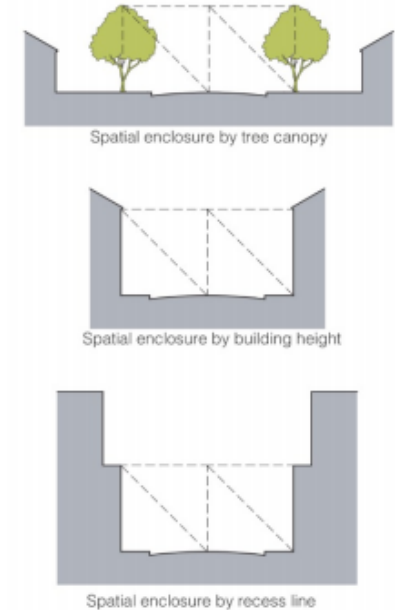
- Provide Sense of Enclosure:

Enclosure refers to the degree to which the urban space is visually surrounded by buildings, fences, palms, trees, and other different landscape elements.

SPATIAL DEFINITION BY HEIGHT-TO-WIDTH RATIO



SPATIAL DEFINITION IN SECTION



DIFFERENT ASPECTS OF CREATING SOCIAL URBAN SPACES

2- Sensual Human Attributes: - Provide a Friendly Environment for People:

Providing a friendly environment that welcomed everyone to see friends, meet and interact with each other, they tend to feel a stronger sense of space that supports these types of social and cultural activities. This friendly environment encourage users to pass by urban spaces a part of their daily social livings.



DIFFERENT ASPECTS OF CREATING SOCIAL URBAN SPACES

2- Sensual Human Attributes: - Human Scale:

Scale is related to the size, texture, and height of physical elements that must be matching and fitting with the size and dimensions of human beings.



DIFFERENT ASPECTS OF CREATING SOCIAL URBAN SPACES

2- Sensual Human Attributes: - Provide Interpersonal Distance for Every User:

The space must conserve a free distance away from each other, as most people prefer not to sit right next to a stranger.



Un-convivial urban spaces by not respecting personal space.

DIFFERENT ASPECTS OF CREATING SOCIAL URBAN SPACES

2- Sensual Human Attributes: - Provide a Clean Environment with a Periodic

Maintenance:

Lack of periodic maintenance leads to increasing the rate of damaging and distortions. Creating partnerships with organizations to sponsor and maintain urban spaces is a good idea to keep the space clean.



DIFFERENT ASPECTS OF CREATING SOCIAL URBAN SPACES

2- Sensual Human Attributes: - Provide Different Opportunities for Eat and Drink:

Providing the urban space with plenty of different opportunities to eat and drink with reasonable prices through the presence of kiosks and food vending machines that don't take a lot of space.



ANALYSIS OF THE SELECTED PROJECTS...

Biscayne Green Boulevard, Miami, USA, the North of America (2017)

1. Project Overview:

Biscayne Green was a three parking areas which are located along Biscayne Boulevard. At 2016 The Miami Downtown Developing Authority decided to transform those parking lots to a green pop-up park by providing the space with different interactive landscape elements.



Biscayne Green before and after the development.

Biscayne Green Boulevard, Miami, USA, the North of America (2017)

2. Project Main Objective:

Miami's downtown aimed to **reduce the vehicle traffic in Miami**, so that it will be more **pedestrian friendly**. So, they begin to transform dull parking areas to a people social space to use it in their daily livings.



Biscayne Green Boulevard, Miami, USA, the North of America (2017)

3. Identifying The Guidelines Of Social Urban Spaces:

1- Physical Aspect: Design attributes:

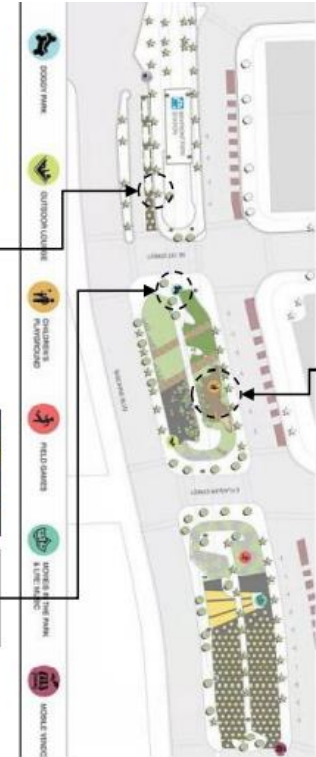
The design attributes include six guidelines:
Wide sidewalks, creating a buffer zone area, place utilities in the furniture zone, provide services and facilities, create children areas and placing bus stop shelters.



There is a buffer zone that separate the space from the street, but there is a no wide sidewalk and bus stop shelters.



The space provides different facilities as dog park equipment and bicycles racks.



There is a children playground where they can play and enjoy their time.

Biscayne Green Boulevard, Miami, USA, the North of America (2017)

3. Identifying The Guidelines Of Social Urban Spaces:

1- Physical Aspect: Functionality:

The functionality includes these guidelines: Provide annual plants, provide trees, palms and flowers, provide plenty of seating opportunities, and organize social events.



There are palms and small trees distributed well all over the space and there are flowers in boxes and ground is covered with lawn to make the space greener.



There are plenty of different types of seats: desks, wooden benches and chairs distributed all over the space.

Many musical events, aerobics & yoga classes have been organised in the space.

Biscayne Green Boulevard, Miami, USA, the North of America (2017)

3. Identifying The Guidelines Of Social Urban Spaces:

1- Physical Aspect: Place Making:

The place making includes these guidelines: Provide high image-ability, the space is with suitable size and scale, provide transparency, and provide space complexity.



Biscayne Green Boulevard, Miami, USA, the North of America (2017)

3. Identifying The Guidelines Of Social Urban Spaces:

2- Psychological Aspect: Safety & Protection:

The safety & protection include these guidelines: Well lightings, provide a comfortable microclimate and provide sense of enclosure.



The lighting is distributed well, right light at space make it feel more welcoming and safe for families and also support night activities and events.



Space Provide sense of enclosure and comfortable climate through day and night as the palms and shades are distributed at space edges.

Biscayne Green Boulevard, Miami, USA, the North of America (2017)

3. Identifying The Guidelines Of Social Urban Spaces:

2- Psychological Aspect: Sensual Human Attributes:

The Sensual Human Attributes include these guideline: Provide a friendly environment, human scale, interpersonal distance, a clean environment and opportunities to eat and drink.



There are many opportunities to eat & drink in the space.

Space offers a friendly welcoming environment for all family and friends with its comfortable seats and bright colours which affect peoples' emotions.

Space is clean & litter bins are distributed well all over it.

The space respects the interpersonal distance between people by arranging the seats all over the space & it also respect human scale ratio.

Biscayne Green Boulevard, Miami, USA, the North of America (2017)



Checklist of social urban spaces guidelines for

Physical Aspects

Physical Aspects		
Design Attributes	Provide wide sidewalks.	—
	Create a Buffer Zone.	✓
	Place utilities in the furniture zone.	—
	Provide different services and facilities like seating, kiosks, Wi-Fi & restrooms.	✓
	Create a nearby bus stop shelters that are furnished by seats and swings.	—
	Create playground and kids area for children.	✓
Functionality	Plant annuals and perennials plants.	✓
	Provide trees, flowers and palms.	✓
	Provide plenty of Seating opportunities.	✓
	Organise social events, different activities and usages inside the Urban space.	✓
	Provide high Image-ability	✓
Place making	Size of the space should be with a reasonable size not too large and not too small	✓
	Provide Transparency to allow people to see or perceive what lies beyond the edges	✓
	Provide complexity which depends on the variation of the physical environment	✓

Psychological Aspects

Psychological Aspects		
Safety and Protection	Provide plenty of suitable light sources	✓
	Provide a comfortable microclimate	✓
	Provide sense of enclosure	✓
Sensual human Attributes	Provide a friendly environment for people	✓
	Sense of human scale	✓
	Provide interpersonal distance for every user	✓
	Provide a clean environment with a periodic maintenance	✓
	Provide different opportunities for eat and drink	✓



REFERENCES

An aerial photograph showing a two-lane road curving through a landscape. The road has a white car in the upper lane and a red car in the lower lane. The surrounding area is filled with trees displaying vibrant autumn colors in shades of yellow, orange, and red. A dark green curved shape is visible in the top left corner of the image.

The references to multiple sources are text & figures
(sketches, drawings, pictures, photos,..etc.)

**ALL THE RIGHTS BELONG TO ORIGINAL
AUTHORS**



ANY QUESTIONS???

THANK YOU...